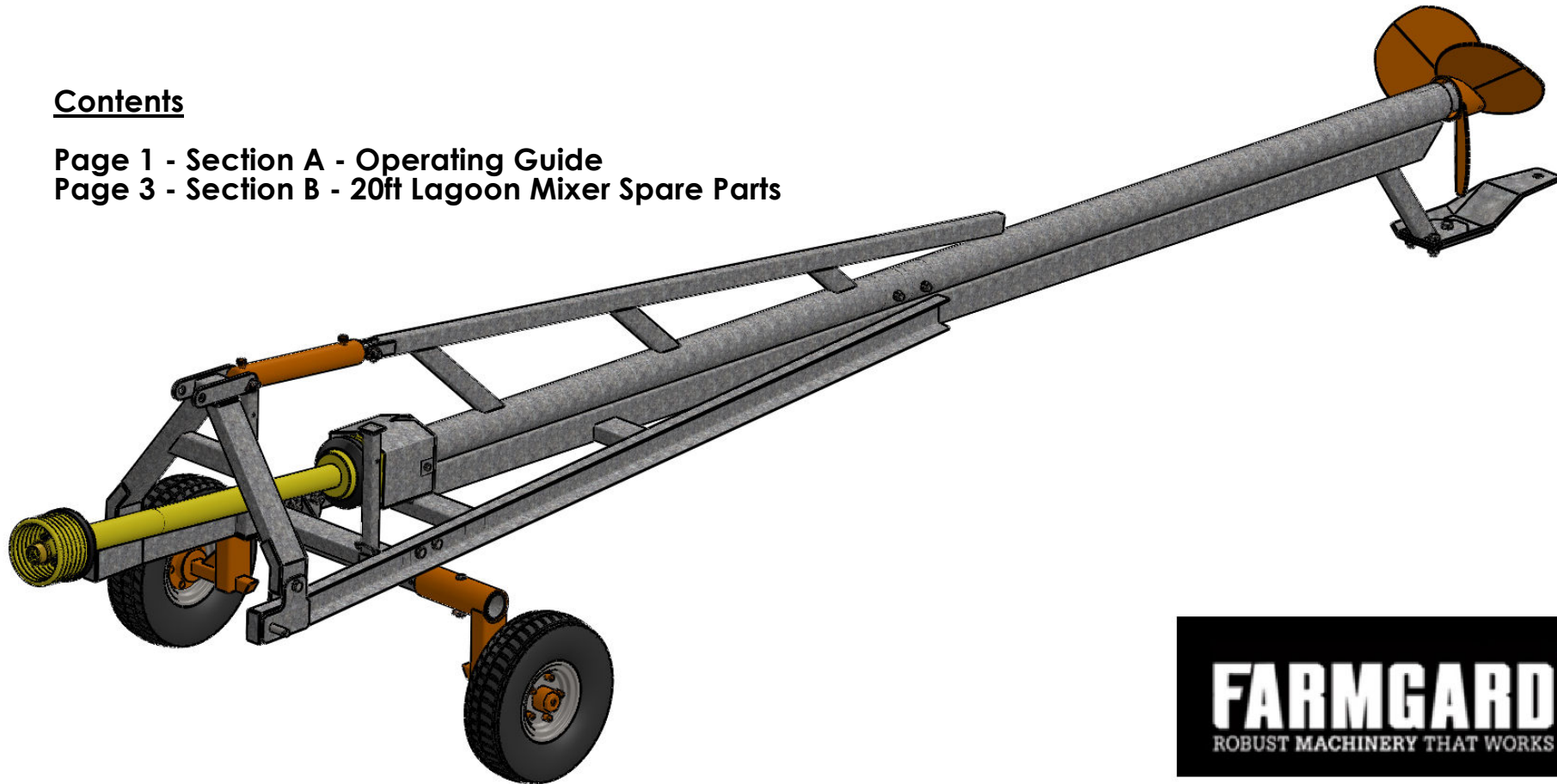


# 15 & 20ft Lagoon Mixer with Optional Wheel Kit Operating Guide & Spare Parts

## Contents

Page 1 - Section A - Operating Guide

Page 3 - Section B - 20ft Lagoon Mixer Spare Parts



## **NEW ZEALAND**

**NDC** : 21 Andrew Baxter Drive, Mangere Manukau 2022, Auckland New Zealand  
PO Box 107110, Auckland Airport, Auckland 21050, New Zealand

**T. 09 275 5555 // F. 09 256 2220**

**SDC** : 8 Redcastle Road, Oamaru 9400, New Zealand

**T. 03 437 9000 // F. 03 437 1451**

[sales@farmgard.co.nz](mailto:sales@farmgard.co.nz)

# Section A Operating Guide

## **User's Guide.**

### **Safety warning - Slurry storage and mixing.**

**Please read carefully** to prevent any accident with slurry storage and mixing.  
Slurry storage can be a threat to livestock and people, gasses which are produced due to decomposition of slurry have been known to kill persons who enter slurry storage tanks.  
There is also a threat to livestock which are on slatted tanks when the slurry is agitated.

Provide good ventilation when mixing in slatted buildings  
When mixing and adding silage effluent slow the mixer down to minimise the release of gasses  
Do not smoke over man-holes when mixing as some gasses are flammable  
Move livestock from slatted building before mixing.

### **Safety Warning - PTO.**

**All guards are provided for your protection**  
**PTO SHAFT MUST BE CUT TO LENGTH TO SUIT TRACTOR**

Keep all guards on the machine and replace quickly should they become damaged  
PTO shaft guard covers should cover the entire shaft and is free to rotate on the shaft  
Make sure that the PTO shaft is connected properly to the machine and tractor, locking clips must be fully open  
Keep loose clothing and limbs well away from PTO when engaged  
Disengage and disconnect PTO before any maintenance on the machine

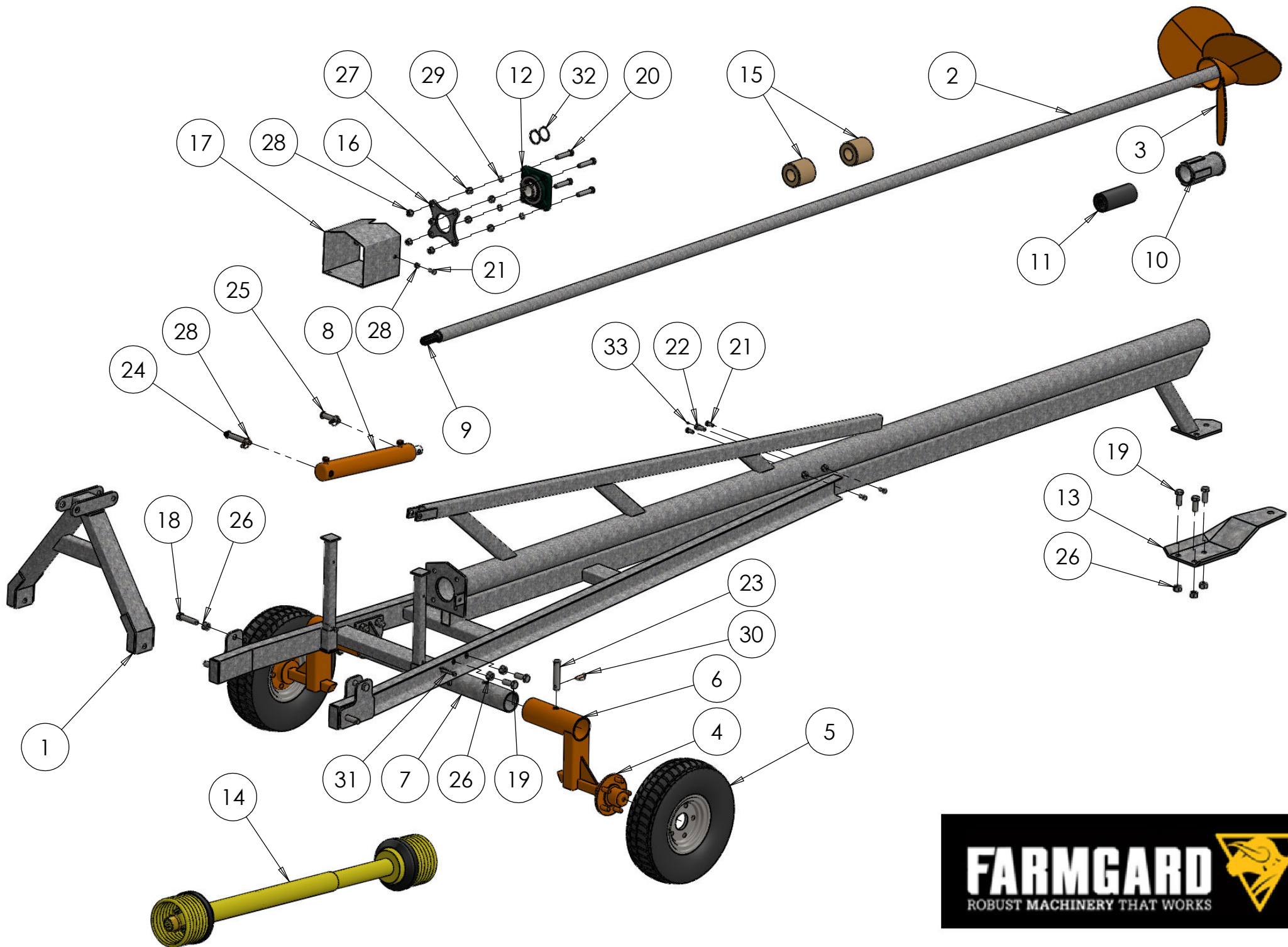
### **Operating Instructions.**

#### **How to operate the machine**

Connect tractor to three point linkage  
Place support legs in raised position  
Connect PTO with shear bolt device on the tractor and plain yoke on the machine  
Lift machine off the ground and move to edge of the lagoon  
Lower machine into lagoon so the propeller is covered by slurry which is used to lubricate rubber bearing  
Using hydraulic ram adjust to depth  
Engage PTO to required speed (540 RPM max)

If sand is present in the slurry when mixing, the life of the machine will be reduced and wearing parts will be excluded from warranty.

# Section B Spare Parts





Item Number	Description	Part Number	Quantity
1	A Frame	SM/39	1
2	Shaft & Propeller (15 ft)	SM/25	1
2	Shaft & Propeller (20 ft)	SM/97 (4819 Long)	
3	Propeller	SM/23	1
4	Stub Axle	SM/95	1
5	Wheel & Tyre	SM/96	2
6	Swing Axle	SM/99	2
7	Static Axle	SM/99A	1
8	A Frame Ram	SM/40	1
9	Stub Shaft	SM/24	1
10	Rubber Bearing Housing	SM/27	1
11	Rubber Bearing	SM/16	1
12	2" Bearing (Machine Faced)	SM/15	1
13	Drawbar	SM/98	1
14	PTO Shaft	PTO/02	1
15	Wooden Bearing (20ft Only)	SM/59	2
16	Star Plate	SM/19	1
17	Mixer Guard	SM/38	1
18	M20 x 120 Bolt	-	2
19	M20 x 40 Bolt	-	7
20	M16 x 90 Bolt	-	4
21	M16 x 25 Bolt	-	6
22	M16 x 35 Drilled for 6mm Grease Nipple	-	1
23	25 x 110 Clevis Pin	CM/06	2
24	19 x 102 Clevis Pin	SM/32	1
25	19 x 75 Clevis Pin	SM/33	1
26	M20 Nut	-	9
27	M16 Plain Galv Nut	-	4
28	M16 Nyloc NUT	-	6
29	M16 Spring Washer	-	4
30	Lynch Pin	SM/65	4
31	Leg Locking Pin	SM/34	2
32	External Circlip	SM/20	2
33	6mm Grease Nipple	ZFIX/01	1